



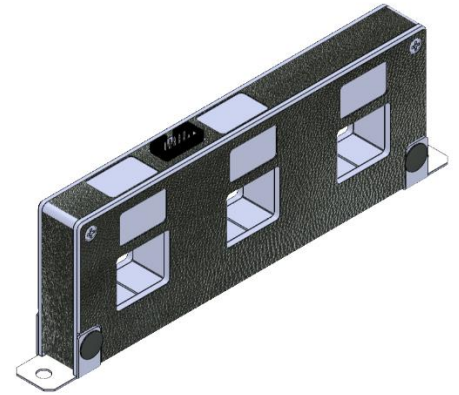
## LOW POWER CURRENT SENSOR (supersedes Hall Effect Sensor CS-A/B/C)

Belle Vue Works, Boundary Street, Manchester, M12 5NG, UK T: 0044 (0)161 230 6363 F: 0044 (0)161 230 6464 E: relays@pbsigroup.com W: www.pbsigroup.com

P&B offer a range of Low Power Current Sensors (LPCS) which are compatible with the Motorvision (MV2) intelligent motor overload relay.

P&B's LPCS is designed to IEC61869-10 and provides protection class accuracy. Being a passive device, it does not require a separate power supply.

The LPCS can be specified and used in LV motor control compartments in place of conventional ring type CTs with 1A or 5A rated secondaries due to its easier fitment into small LV compartments.

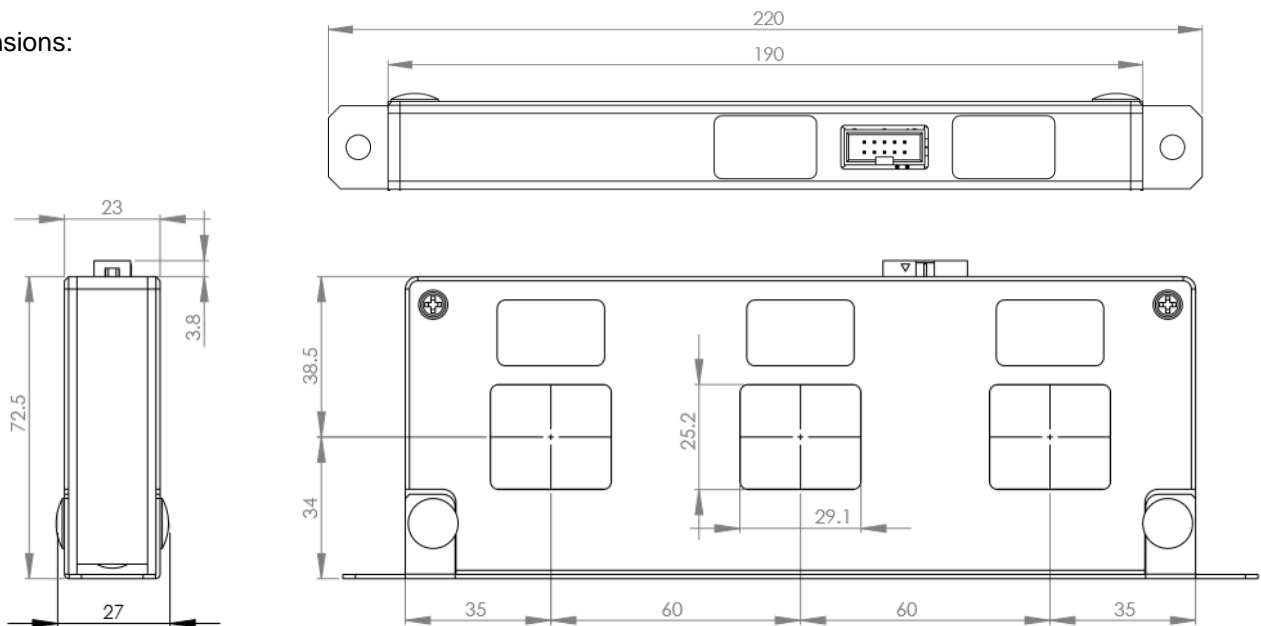


### Ratings:

LOW POWER CURRENT SENSOR	SENSOR RATIO	FULL LOAD CURRENT RANGE	SENSOR FEATURES
LPCS-20A	20A:840mV	12A-24A	Din Rail (by request) or Foot Mounting Rated System voltage 0.72/3kV Aperture size = 29.1mm x 25.2mm <b>PROTECTION CLASS 5P10</b>
LPCS-50A	50A:840mV	25A-60A	
LPCS-80A	80A:840mV	48A-96A	
LPCS-100A	100A:840mV	60A-120A	
LPCS-150A	150A:840mV	90A-180A	
LPCS-200A	200A:840mV	120A-240A	

Sized for motor full load current (FLC) between 60% to 120% of  $I_n$

### Dimensions:



Issue 2 June 2020 Low Power Current Sensor

PBSI Group Limited

P&B Protection Relays

P&B Switchgear

Registered Office, Belle Vue Works, Boundary Street, Manchester, M12 5NG. Company No. 2030212

Intelligent Protection & Control Relays, LV and MV Drawout Protection Relays

New Build, Retrofit & Refurbished Medium Voltage Switchgear



Certified by Afnor UK